

# PRAYER REQUESTS

Please pray there would be unity in the church (ours & the church at large.)

*"Make every effort to keep the unity of the Spirit through the bond of peace" Ephesians 4:3*

Please continue to pray for Mim to be healed.

Please pray for Kelly as he continues to battle cancer.

Pray Terry Rose's knee continues to heal.

Praise the Lord Lani & Marty's house closed!! Thank you for all your prayers!

Please bring Gwen Easley's housing concern to the throne of our heavenly Father. Pray she will find the perfect roommate to alleviate her financial burden.

Please pray our Heavenly Father will hold Bonnie close as she walks her current health journey.

Be in prayer for the Sheltons as both Jim & Laura have been ill.

## MISSIONS GIVING

We are thankful for our congregation's generosity towards our four missionaries

Due to IRS regulations we ask you to **not** write their name in the check's memo.

Instead please write the missionary's sending agency:

Gary Myers - CTEN

Kevin Domes - InFaith

Nate Atchison - Frontiers

Thema Black - UNKF

## USUAL CHURCH OFFICE HOURS

Monday-Friday 9:00AM-2:00PM

PASTOR'S DAY OFF- Monday

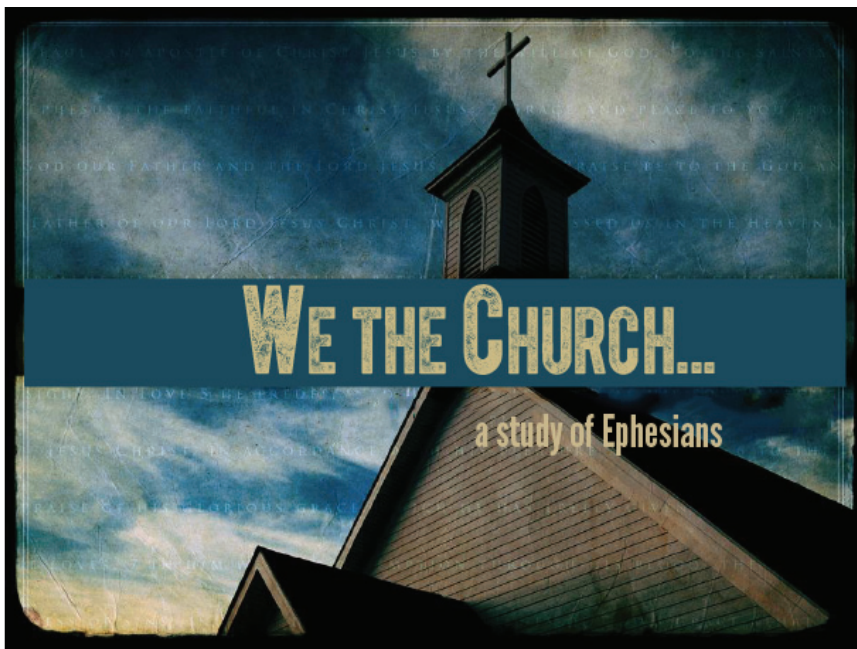
Pastor Colton Emmert: colton@riversho.org

PO Box 873 • 1658 Long St, Sweet Home, OR 97386 • (541)367-6855  
office@riversho.org • website: riversho.org



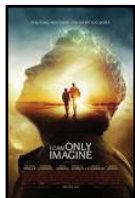
# April 8, 2018





### 60<sup>th</sup> Anniversary

Please join us Friday April 13<sup>th</sup> in the Ministry Center to celebrate Ralph & Clarene Myers' 60<sup>th</sup> Anniversary! This Open House will be from 5pm-9pm. Light refreshments will be served.



### Fun at The Rio

We will be attending the matinee showing of "I Can Only Imagine" at 2PM on April 15<sup>th</sup>. Cost is only \$5. Please place your payment in offering with a note of the number of tickets needed. Please write "scholarship" on your connection card if you would like to attend but need assistance.



### Church Directory

If you would like to have your information included in our current directory please complete a Connection Card. Please write "Directory" on the back.



### Husky Huddle

Our student outreach is EVERY Friday. We have partnered with Campus Life and other churches to help students to connect with the local church body. Please pray the Lord draws students to Him.

## Event Calendar

- 4/10 Men's Bible Study, 7:30AM, CHURCH OFFICE
- 4/10 Women's Fellowship, 10AM, DONNA SWANKS'S HOME
- 4/13 Husky Huddle, 12:15PM, MINISTRY CENTER
- 4/15 "I Can Only Imagine", 2:00PM, THE RIO
- 4/21 Men's Fellowship Breakfast, 8AM, MINISTRY CENTER
- 4/22 Jantzi's Mission Trip Update, 10AM, WORSHIP CENTER
- 9/14-16 Women's Fall Retreat, TBA, CAMP ATTITUDE

## Ministering Today

Pastor Colton Emmert

• **Worship Leader** •  
Devon Allen

• **Greeters** •  
Ralph & Clarene Myers  
Next Week - Scott & Julie E.

• **Ushers** •  
Steve Martin & Terry Rose  
Next Week - Ron B. & Larry D.

• **Lock Up** •  
Pam Miner  
Next Week - Ralph Myers

• **Sunday School K-6** •  
Doug & Dianne Shank  
After Worship to 11:15am

## Our Leadership

### Pastoral Leadership Team

Pastor Colton & Marissa Emmert  
(541) 401-4932

Randy & Arlene Jantzi  
(541) 258-6749

Arlen & Cathy Emmert  
(541) 401-9149

Perry & Kay Crocker  
(541) 367-2404

### Worship Ministry Coordinator

Randy Jantzi (541) 258-6749

### Children's Ministry Coordinator

Marissa Emmert  
(541) 410-9025



FOLLOW US ON FACEBOOK  
@theriversho



LISTEN ONLINE  
Online Sermons  
riversho.org