

NOTES

Empty space for notes.

PRAYER REQUESTS

PRAISE!! Steve & Sandi Martin's grandson Donovan's platelets have increased & his body is beginning to make it's own platelets. His activity is still limited but the progress is great!

Please pray for continued healing in our church family.

USUAL CHURCH OFFICE HOURS

Monday-Friday 9:00AM-3:00PM

PASTOR'S DAY OFF- Monday

PO Box 873 • 1658 Long Street, Sweet Home, OR 97386 • (541)367-6855
office@riversho.org • website: riversho.org



RIVER OF LIFE FELLOWSHIP MAY 7, 2017



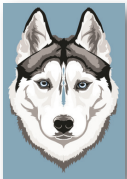


“FILLED WITH THE HOLY SPIRIT”

Pastor Colton Emmert
I Corinthians 12

Oregon Sacred Festival Chorale Benefit Concerts

The 9th Annual Benefit Concerts will be tonight 6PM at the Lebanon First Assembly of God and 6PM May 21st at the Willamette Community Church in Albany. All free will offering proceeds go to support PNW Adult & Teen Challenge, Mennonite Disaster Service & Willamette International.



Husky Huddle

Lunch will be served to high schoolers Tues, May 16th. If you would like to help, we could use individual bags of chips, soda, or baked goodies. If you would like to serve on the volunteer team, please contact Colton.



Men's Fellowship Breakfast

Join the Men's Ministry team on Sat. May 20th at 8AM in the Ministry Center for a delicious breakfast & devotional by John Byler. Contact Ralph for more details.



Women's Ministry BUNCO Party!

May 27th 1:00PM in the Ministry Center. Please bring some finger food to share. Don't miss this one! The grand prize will be a beautiful hanging basket!

Event Calendar

- TODAY Children's Sunday School, 9:30AM-10:15AM, WORSHIP CENTER
- TODAY Adult Sunday School, 9:30AM-10:15AM, OFFICE OR FELLOWSHIP
- TODAY Oregon Sacred Festival Chorale, 6:00PM, LEBANON FIRST ASSEMBLY OF GOD
- 5/09 Men's Bible Study, 7:30AM, CHURCH OFFICE
- 5/09 Women's Prayer, 10AM, DONNA SWANK'S HOME
- 5/16 Husky Huddle, NOON, MINISTRY CENTER
- 5/20 Men's Fellowship Breakfast, 8AM, MINISTRY CENTER
- 5/21 Oregon Sacred Festival Chorale, 6:00PM, WILLAMETTE COMMUNITY CHURCH
- 5/27 Women's Bunco Party, 1PM, MINISTRY CENTER

Ministering Today

Pastor Colton Emmert

• **Worship** •

Sumner Ellis, Emily Schwahn & Team

• **Greeters** •

Dan & Shirley Suing

Next Week - Roger & Natalie Campbell

• **Ushers** •

Ron Bloom & Robin Pyle

Next Week - Ralph & Clarene Myers

• **Lock Up** •

Pam Miner

Next Week - Bob Green

• **Sunday School** •

9:25 to 10:15

Pre-K - 8th Grade in Ministry Center

Donna Swank & Dee Beemer

Our Leadership

Pastoral Leadership Team

Pastor Colton & Marissa Emmert

(541) 401-4932

Randy & Arlene Jantzi

(541) 258-6749

Arlen & Cathy Emmert

(541) 367-6698

Perry & Kay Crocker

(541) 367-2404

Worship Ministry Coordinator

Randy Jantzi (541) 258-6749

Nursery Coordinator

Judy James (541) 367-3915

Hospitality Coordinator

Judy James (541) 367-3915

Sunday School Coordinator

Donna Swank (541) 367-3692

CHURCH DIRECTORY 2017



Temporary church directories are now available on the back information table. The fancier version will be completed at a later date. Any corrections may be submitted via email to office@riversho.org or by completing a Connection Card and placing it in the offering plate as it is passed by.



FOLLOW US ON FACEBOOK

@theriversho



LISTEN ONLINE
Online Audio
riversho.org